

TECHNICAL PARAMETERS FOR PORTAL ACCESS

Minimum Requirements to access the site:-

1. Computer with Windows 2000 or higher Operating System.
2. Internet Explorer version 5.5 or above.
3. Legally valid Digital Signature Certificate (DSC).
4. Internet Connection.

Your computer should avail all the rights of Admin log-in

Process for the eToken Driver Installation from www.nprocure.com

For E-Bid submission, vendors shall have to install e token drivers in local PC as shown below:

Step-1- Open www.nprocure.com

Step-2-Click on “Resources” link which appears on the top and the following screen will be there.



MARQUEE

Resources

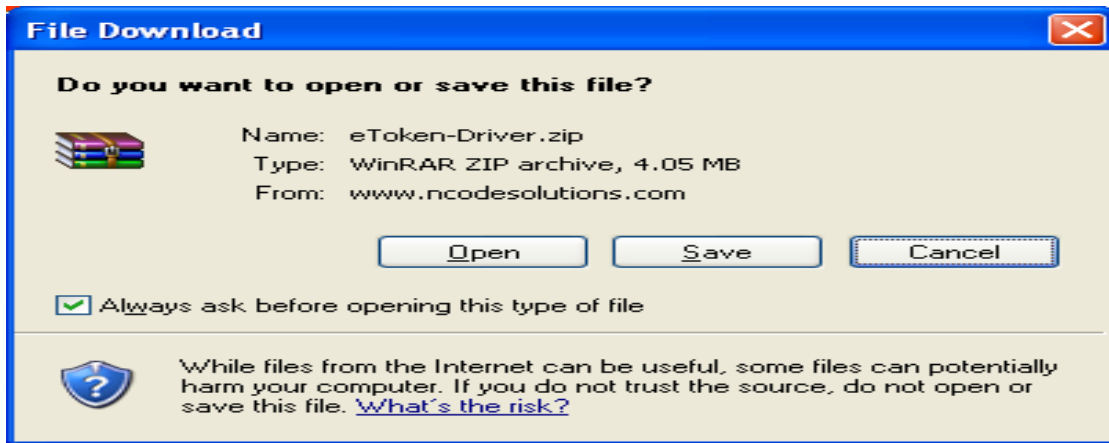
You can find all the resources related to Digital Signatures and documentation also we have listed out some the important links that will help in the process of understanding Public Key infrastructure Technology as we about Digital Signatures.



- **White Papers**
 - » [An Introduction to Cryptography and Digital Signatures v2.0](#)
 - » [Digital Signatures Best Practicce for e-Business](#)
 - » [How Securing Digital Identities & Information Can Help Transforri Your Business](#)
- **Link to Important Sites**
 - » <http://www.entrust.com/>
 - » <http://www.cca.gov.in/>
 - » <http://www.pkiforum.org/>
- **Download Drivers**
 - » [Driver for eToken](#)
 - » [Utility for eToken](#)

Trusted sites

Step-3-Now click on “Driver for e-token” from the “Download Drivers” link and following screen will be there



Now “save” the above file and Run on your local PC

FAQ Section of site

If Vendors have any doubts or queries regarding ‘nprocure’ site or system requirements, kindly follow the below steps.

Step-1–Open www.nprocure.com

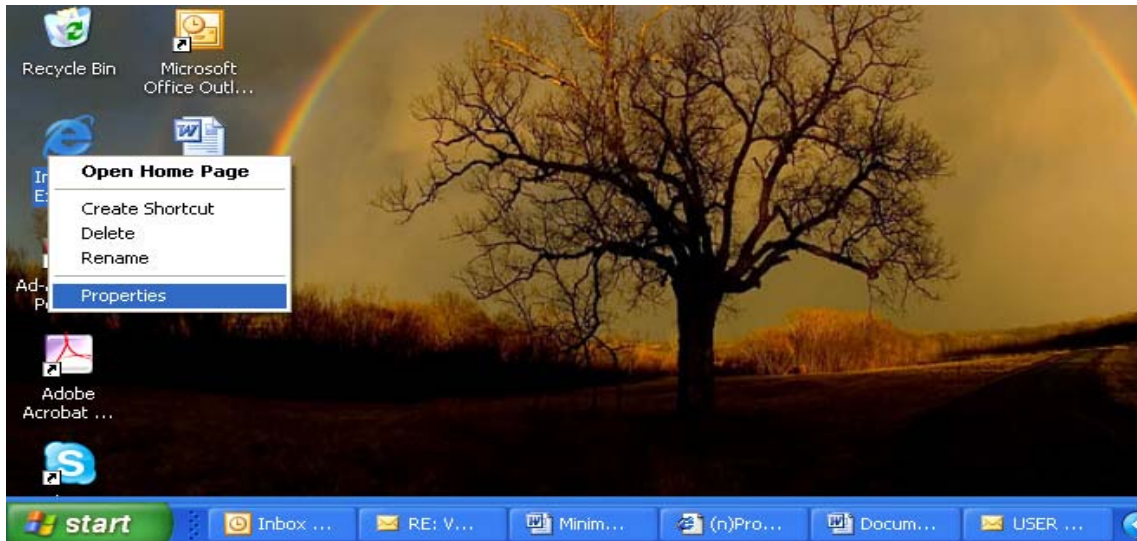
Step-2-Click on “FAQs” link from the top and the following screen will appear.

From the above screen, vendor can also verify the system requirements or how to add nprocure site as a trusted site.

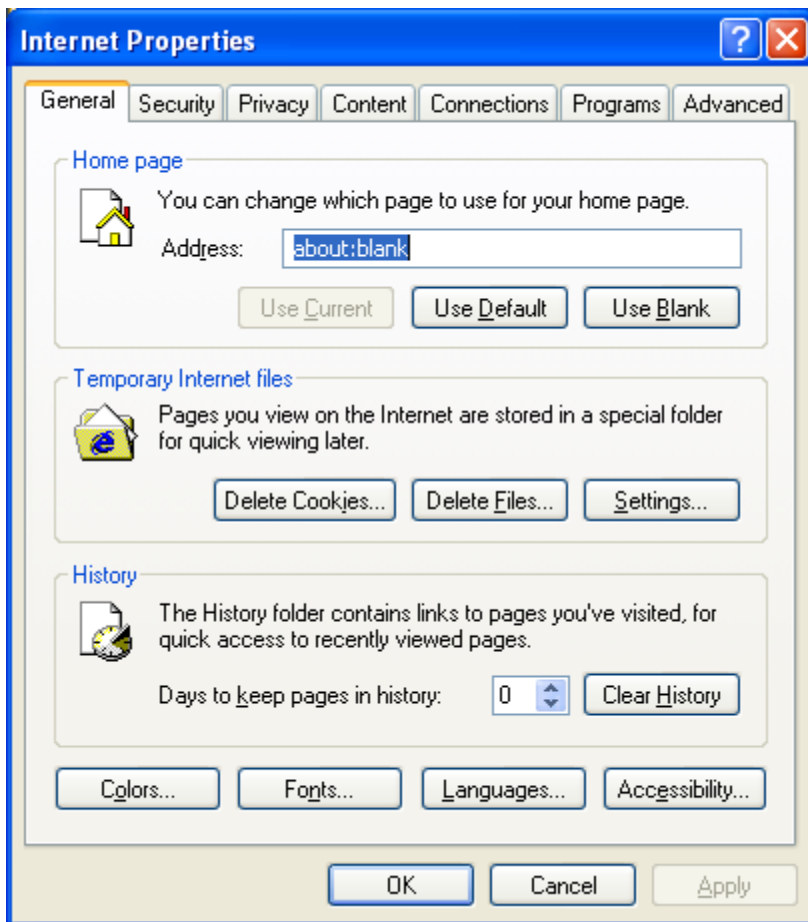
Process for Checking Browser Settings of Local PC

At times vendors may have to check their local PC settings of the Browser. Following steps may be taken to check all the Browser Settings.

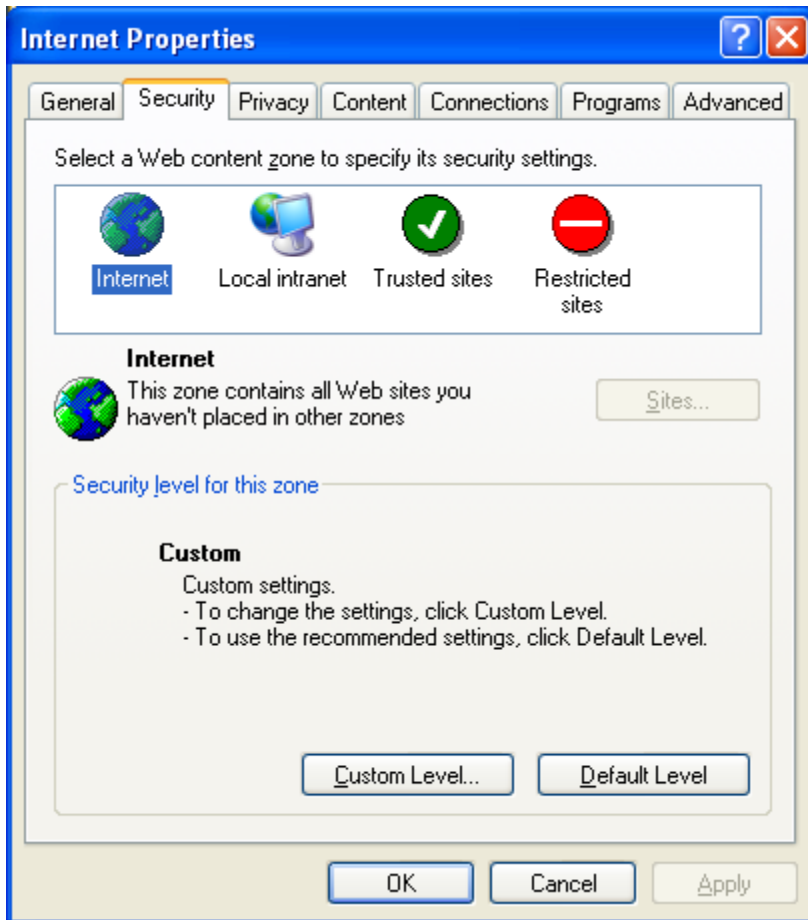
Step-1- Right click on Internet Explorer icon of your local PC's desktop.



Now click on “Properties” of the Internet Explorer icon, following screen will appear.



In the above screen, on clicking “Security” option, following screen will appear.














In the above screen, click on “Custom Level” option given in the security option and the following screen will appear.

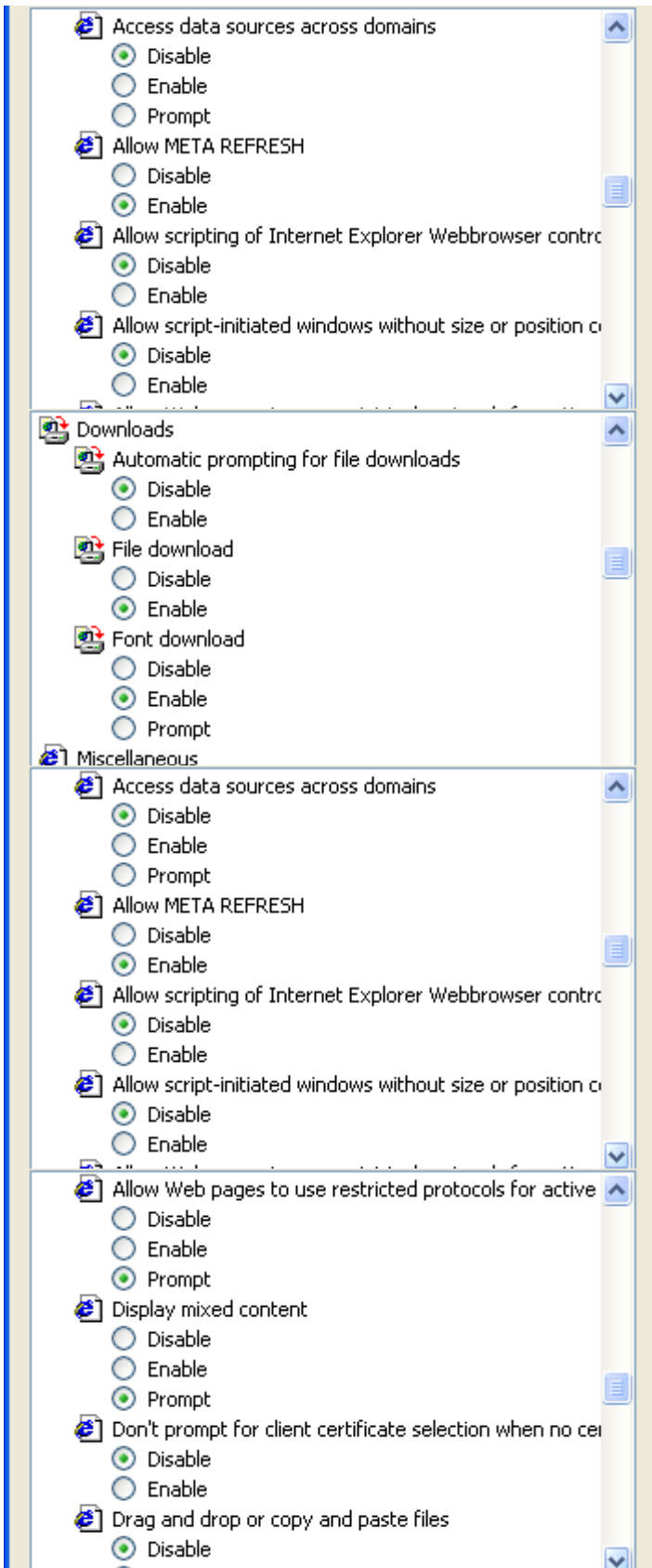
“Enable” all ActiveX Controls and Plug-ins and “Disable” Pop-up blocker as shown in the screens below.

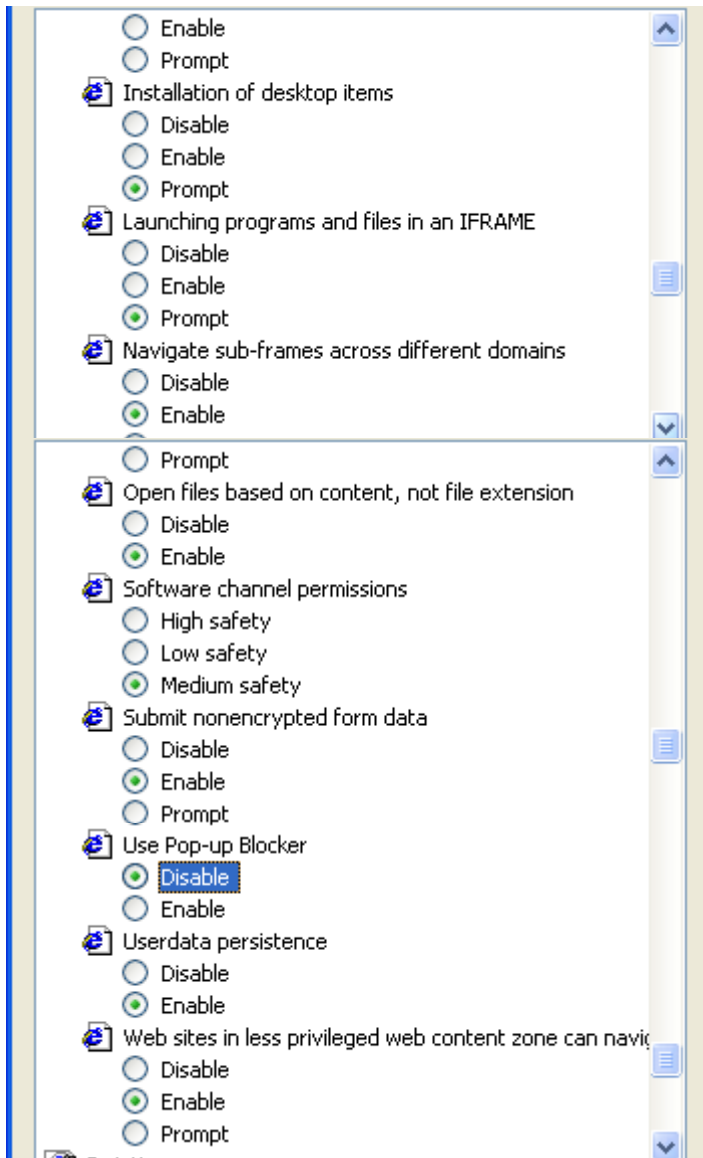
Security Settings

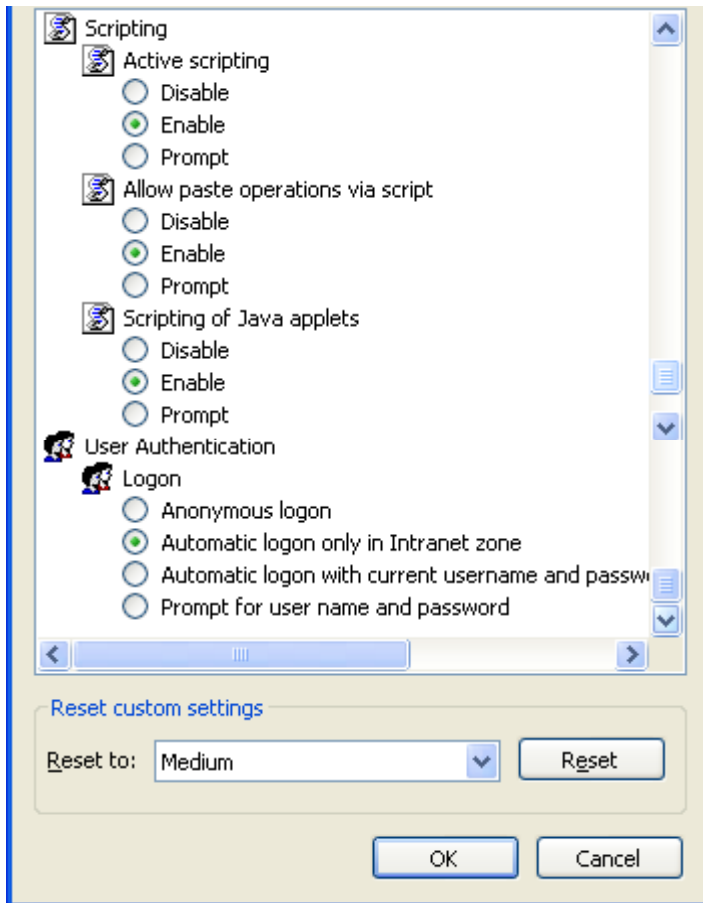


Settings:

-  .NET Framework-reliant components
 -  Run components not signed with Authenticode
 - Disable
 - Enable
 - Prompt
 -  Run components signed with Authenticode
 - Disable
 - Enable
 - Prompt
-  ActiveX controls and plug-ins
 -  Automatic prompting for ActiveX controls
 - Disable
 - Enable
 -  Binary and script behaviors
 - Administrator approved
 - Disable
 - Enable
 -  Download signed ActiveX controls
 - Disable
 - Enable
 - Prompt
 -  Download unsigned ActiveX controls
 - Disable
 - Enable
 - Prompt
-  Initialize and script ActiveX controls not marked as safe
 - Disable
 - Enable
 - Prompt
-  Run ActiveX controls and plug-ins
 - Administrator approved
 - Disable
 - Enable
 - Prompt
-  Script ActiveX controls marked safe for scripting
 - Disable
 - Enable
 - Prompt







After verifying all the above security parameters just click on “OK” button.

Pop-up Blocker Settings for the www.nprocure.com

Turn off “Pop-up blocker” from Internet Explorer/Yahoo Toolbar/Google Toolbar/etc. (if available)

Windows XP:

- (i) Internet Explorer → Tools → Pop-up Blocker - Turn off “Pop-up blocker”
- (ii) Internet Explorer → Tools → Internet Options Security Custom Level
Use Pop-up Blocker → **Disable**